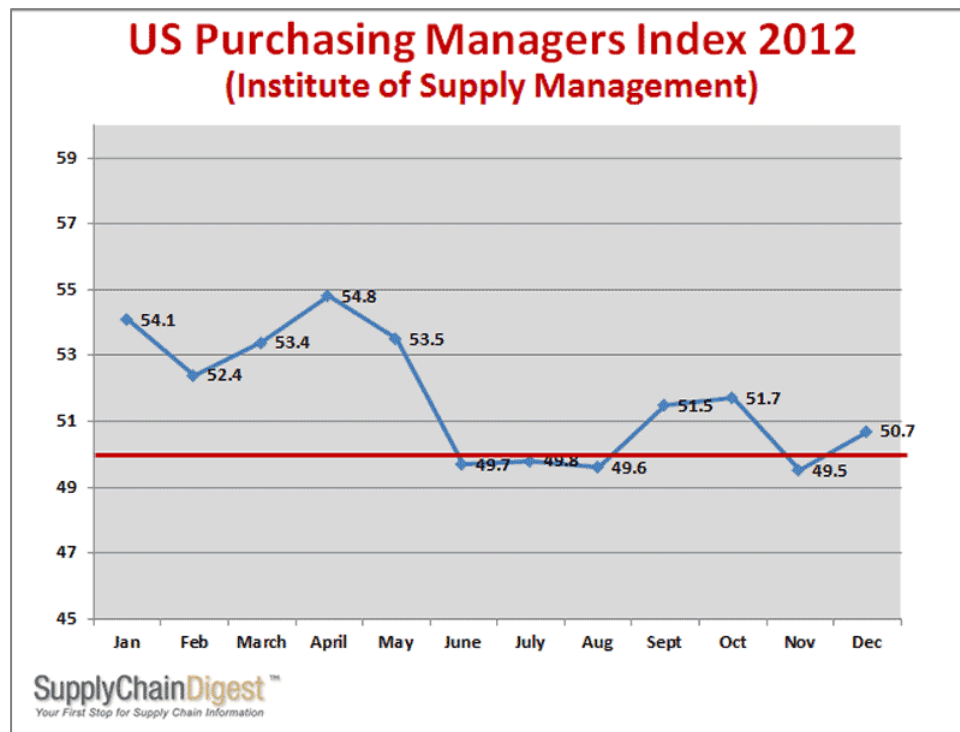
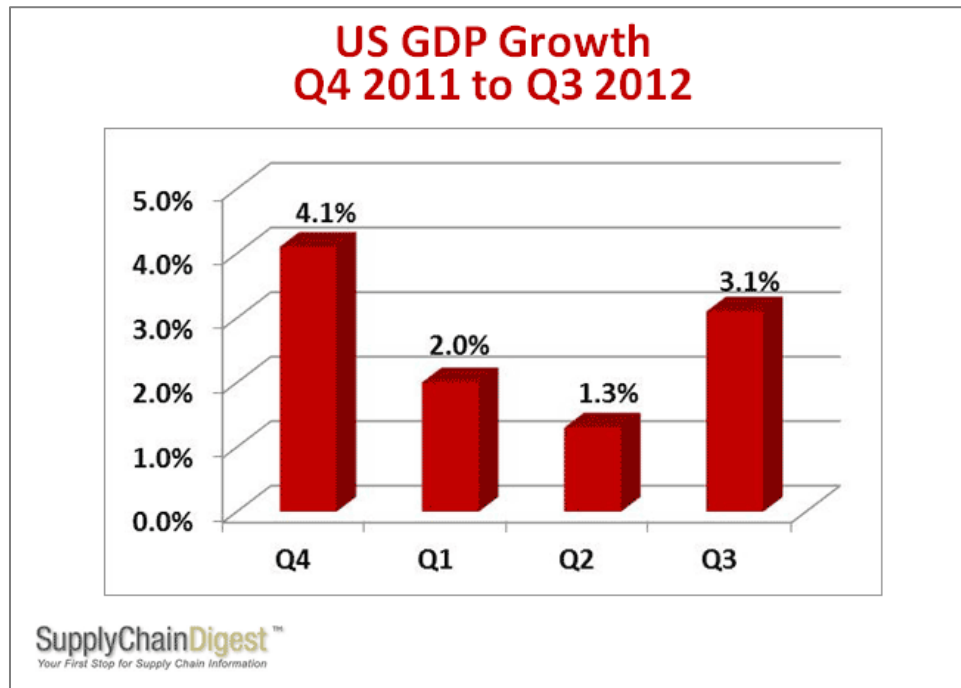
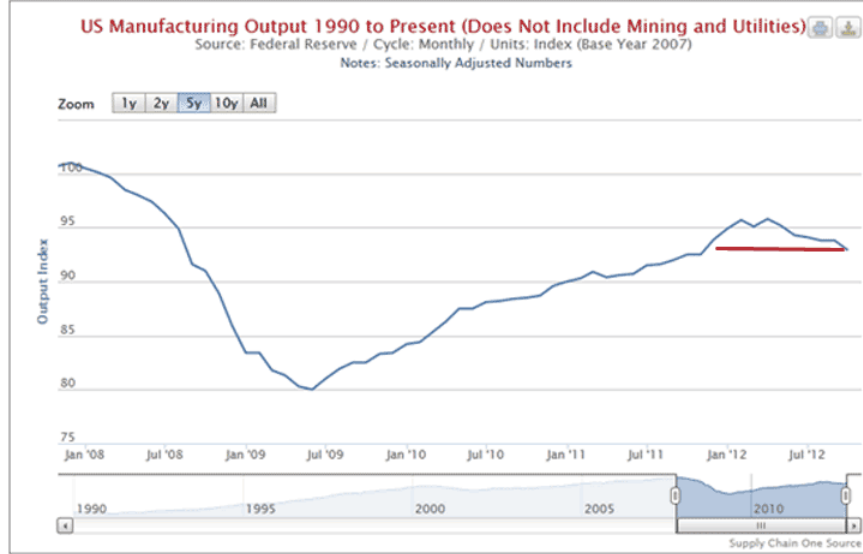


## Supply 2012 in Numbers and Graphs



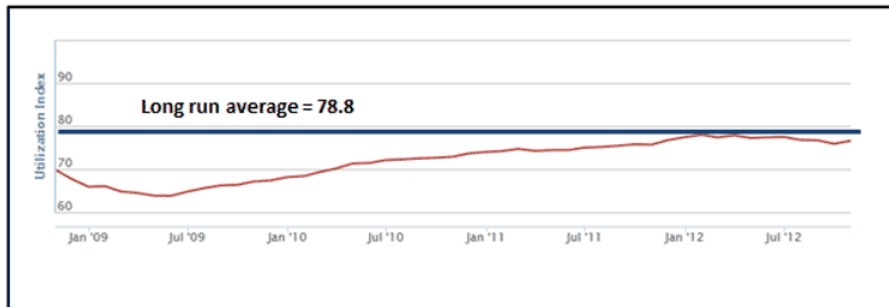
# SupplyChainDigest™

Your First Stop for Supply Chain Information



SupplyChainDigest™  
Your First Stop for Supply Chain Information

## US Manufacturing Capacity Utilization



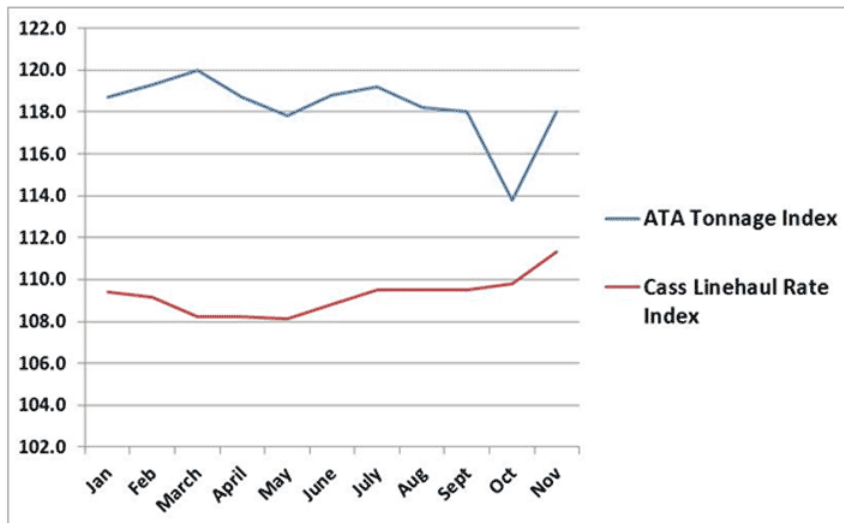
SupplyChainDigest™  
Your First Stop for Supply Chain Information

## Oil Prices 2012 (West Texas Intermediate – WTI)

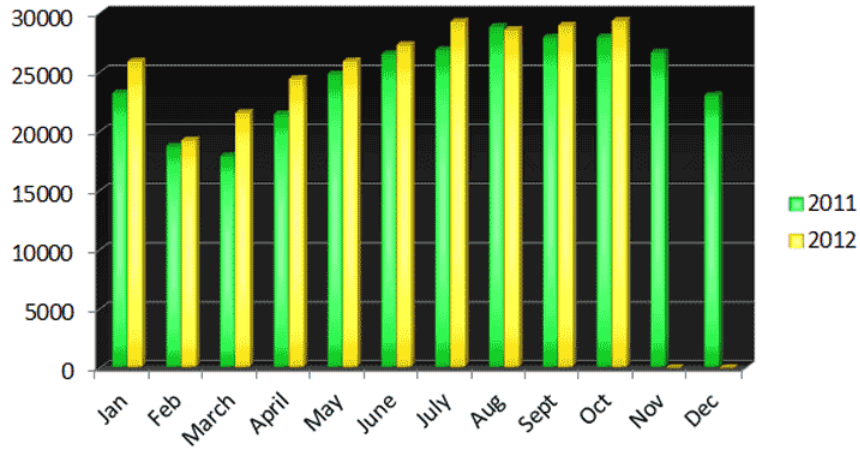


**Year Start: \$97.48**  
**Year End: \$91.79**  
**Peak: \$109.43 (late March)**  
**Trough: \$81.72 (late June)**

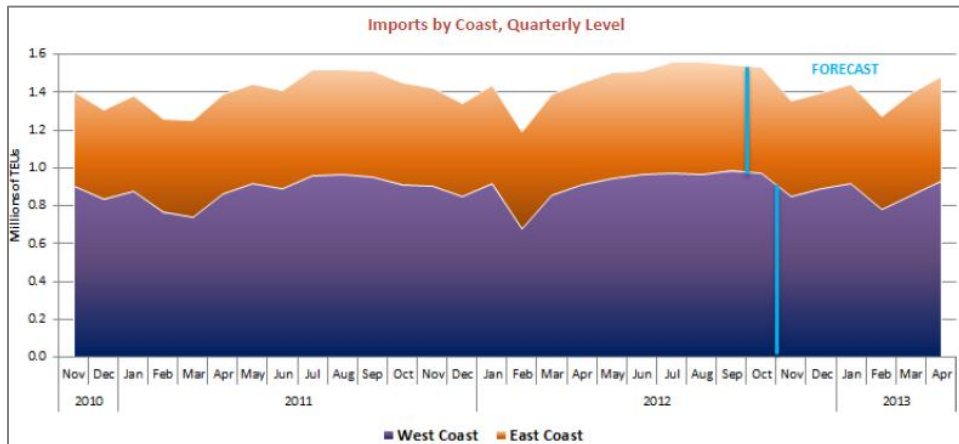
## ATA Freight Tonnage Index vs Cass Linehaul Price Index 2012



## Monthly US Trade Deficit with China in Goods 2011-12

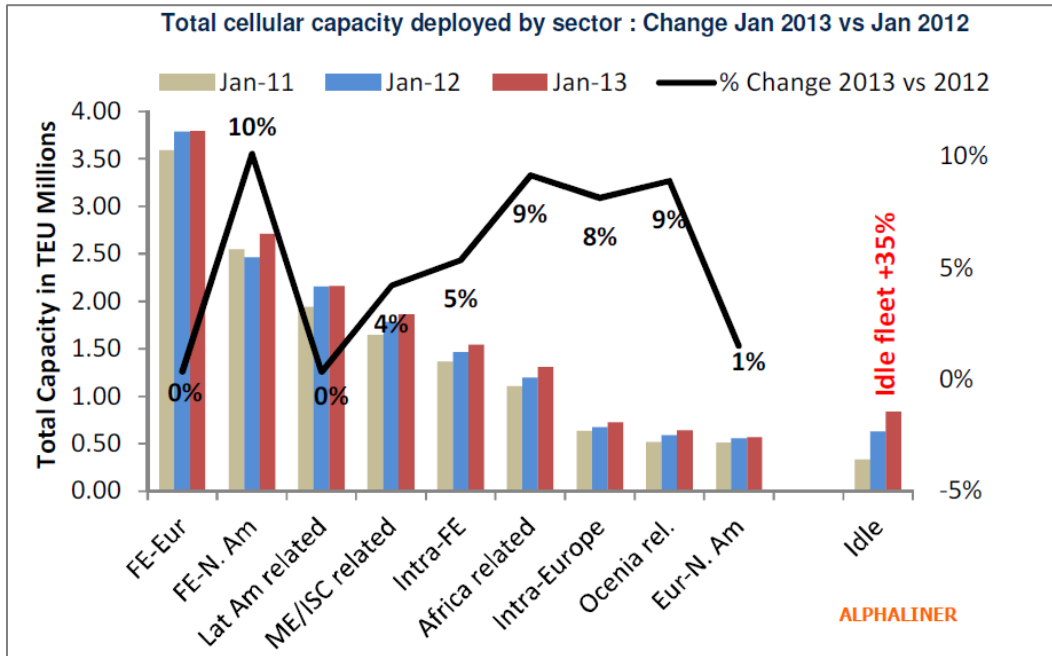


Full Year 2011 total was \$295.4 billion, an all-time record.  
 At \$261.6 billion through October, 2012 will easily shatter that record.



Source: NRF Port Tracker

**Global Container Ship Capacity Changes in 2012**



**Source: Alphaliner**